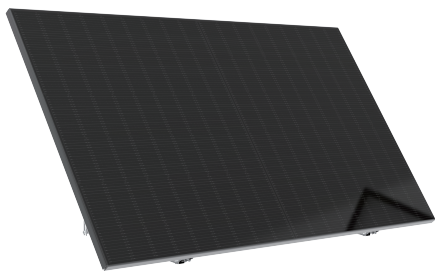


iShare-Home Mini Smart Solar System

iShare-Home-Mini Solar System is a micro power generation system for home users that integrates PV modules, micro-inverter, mounting structure system and cable set. It converts DC generated by sunlight into AC for home use, which is provided for home loads.



High Efficiency

All Black PV modules
Low voltage for safe operation
High efficiency and low LID TOPCon monocrystalline technology



Multi-Scenarios Application

Adapt to multiple scenarios: balcony, Garden, Wall and etc.
Alluminum alloy, light weight and better corrosion resistance
Adjustable angle 30° - 50°, flexible to different region



Extreme safety

Low voltage Safe operation
Suitable for a variety of outdoor environments with IP67 Degree Protection
Module level real-time monitoring, Intelligent detection, Remote upgrade, fault alarm



Pre-Installation and Connection

Standardized wire length, pre-installed plugs and pre-connected
All components in one box and highly pre-assembled, easy installation

System Configuration

System capacity (W_{ac})	800
No. PV module (pcs)/425W	2
Inverter (pcs) / SL-M800-C	1
Plug + AC cable + Female 3P Connector (set)	1
Mounting Structure (set)	2

Components

PV modules	
Model	SL-108NA-425
Maximum power / W	425
Open-circuit voltage / V	37.83
Short circuit current / A	14.05
Peak power voltage / V	31.94
Peak power current / A	13.31
Temperature coefficient of short circuit current (I_{sc}) / A	+0.050%/°C
Temperature coefficient of open circuit voltage (V_{oc}) / V	-0.263%/°C
Temperature coefficient of peak power (P_{max}) / W	-0.343%/°C
Max. Efficiency	21.76%
Dimension (L×W×H) / mm	1722×1134×30
Weight / kg	21.5
Certificate	IEC 61215, IEC 61730, IS 9001: 2015, ISO 14001:2015, IEC 62716, IEC 61701, IEC TS 62804-1, IEC 60068-2-68

Components
Micro-Inverter

Model SL-M800-C

Input / DC

PV module Power / W 425 (2pcs)
 Max. Input Voltage / V 60
 MPPT Voltage Range / V 25-55
 Max.Input Current / A 15/15
 Max. DC Short Circuit Current / A 20/20

Output / AC

Rated Power / W 800
 Rated Grid Voltage / Vac 220/230/240
 Grid Connection L-N-PE
 Rated Power Frequency / Hz 50/60
 Max. Output Current / A 3.6
 Power Factor >0.99
 THDi@ Rated Power <3%
 Max.Units per Branch 5

Efficiency

Max. Efficiency 96.50%
 MPPT Efficiency >99.9%

Protection Function

Anti-Islanding Protection Integrated
 Input Reverse Polarity Protection Integrated
 Output Over Current Protection Integrated
 Output Short-Circuit Protection Integrated
 Over Voltage Protection II (DC), III (AC)

General Data

Dimension (W × H × D) / mm 230 × 190 × 46.5
 Weight / kg 3.3
 Noise Emission (Typical) / Db (A) 20
 User Interface LED
 DC Connection Type MC4
 AC Connection Type Plug-in Connector
 Communication Wifi
 Cooling Method Natural Cooling
 Operating Ambient Temperature / °C -40 ~ +65
 Relative Humidity 0% ~ 100%
 Max. Operating Altitude / m 3000(>3000 Derating)
 Protection Class (IEC 60529) IP67
 Climatic Category (IEC 60721-3-4) 4K4H
 Topology High Frequency Isolated
 Night Consumption / mW <50

Plug

Plug + AC cable JT008 H07RN-F 3G1.5mm² Black (5 meters)
 Female 3P Connector 104420300 × 2_42A
 Rated Voltage / V 600
 Connector + DC Cable H1Z2Z2-K 1 × 6mm²

Mounting Structure

Material Alluminum alloy 6005-T6, SUS304
 Scenario Balcony,Garden,Wall and etc.
 Weight / kg 10
 Adjustable angle 30° - 50°

System Warranty

10 years